



**PYRAMID**  
HOMES, INC.



## THE PAMLICO

3 BEDROOMS, 2 ½ BATHS  
2 CAR GARAGE  
2304 HEATED SQ. FT.  
40'W X 52'D

[www.buildpyramid.com](http://www.buildpyramid.com)



**PYRAMID**  
HOMES, INC.

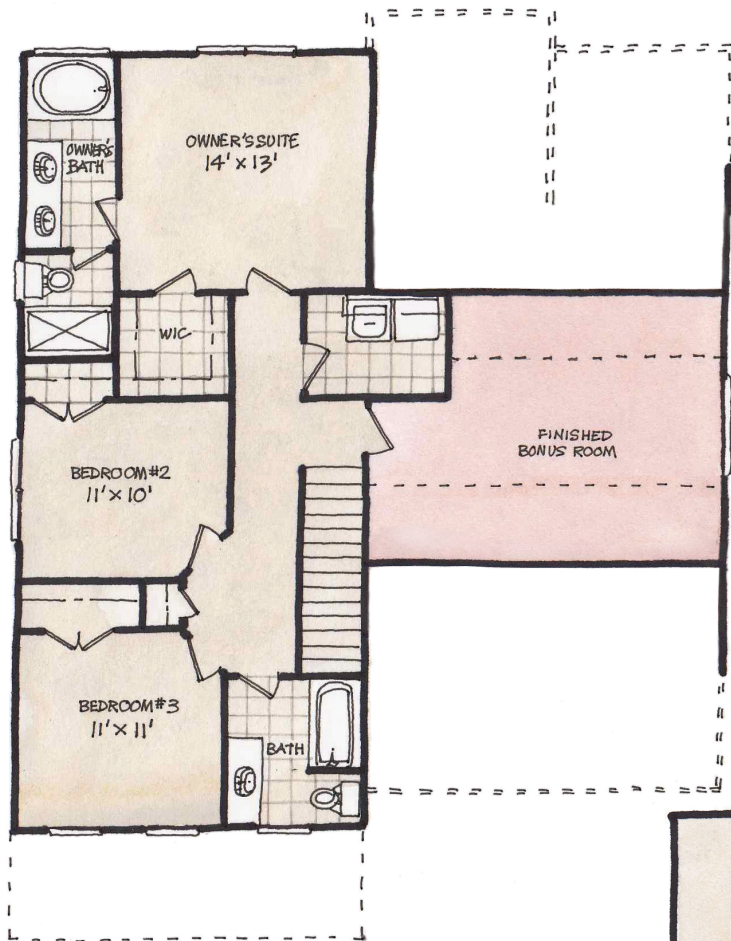
## FEATURES:

- Covered Front porch
- Owner's Suite Upstairs with Walk in Closet & Trey Ceiling
- Brushed Nickel Hardware and Lighting Fixtures
- Hardwood floors in foyer
- Utility / laundry room
- Formal Dining Room with Coffered Design Ceiling
- Kitchen with Eat-in Nook and Breakfast Bar
- Workshop Area in Garage
- Study/4th Bedroom Downstairs
- Finished Bonus Room Upstairs



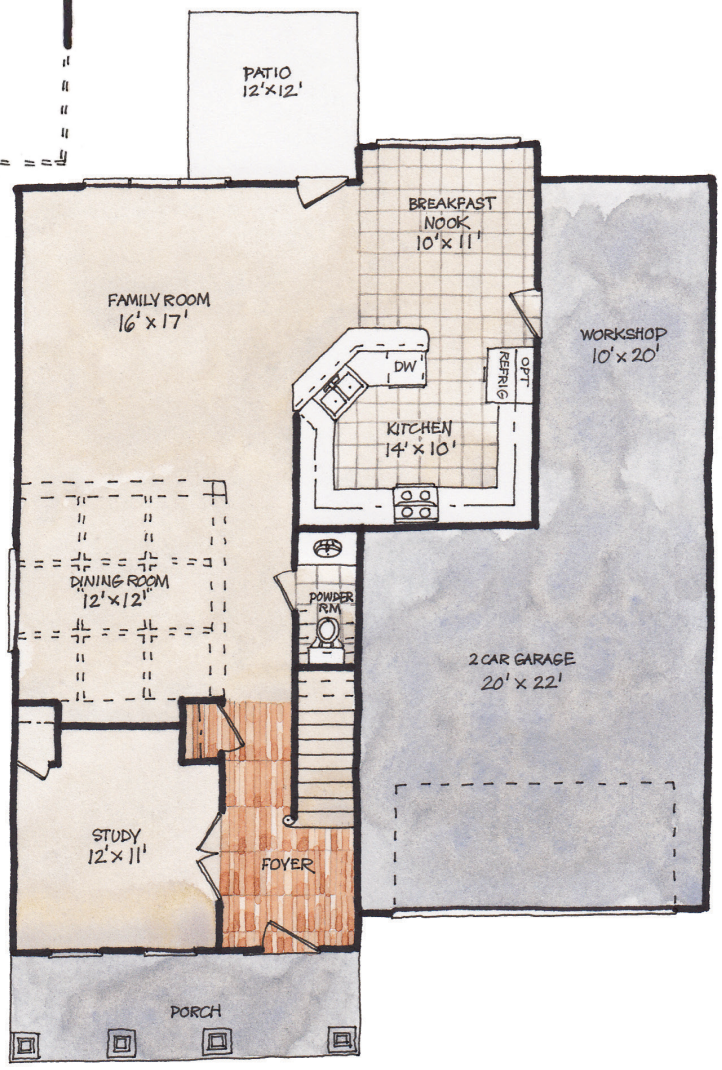
# THE PAMLICO

## 2ND FLOOR



DIMENSIONS ARE APPROXIMATE

## 1ST FLOOR



[www.buildpyramid.com](http://www.buildpyramid.com)