



THE MARLIN

3 BEDROOMS, 2 BATHS
1 OR 2 CAR GARAGE
1227 HEATED SQ. FT.
36'W X 45'D (1 CAR)
44'W X 45'D (2 CAR)

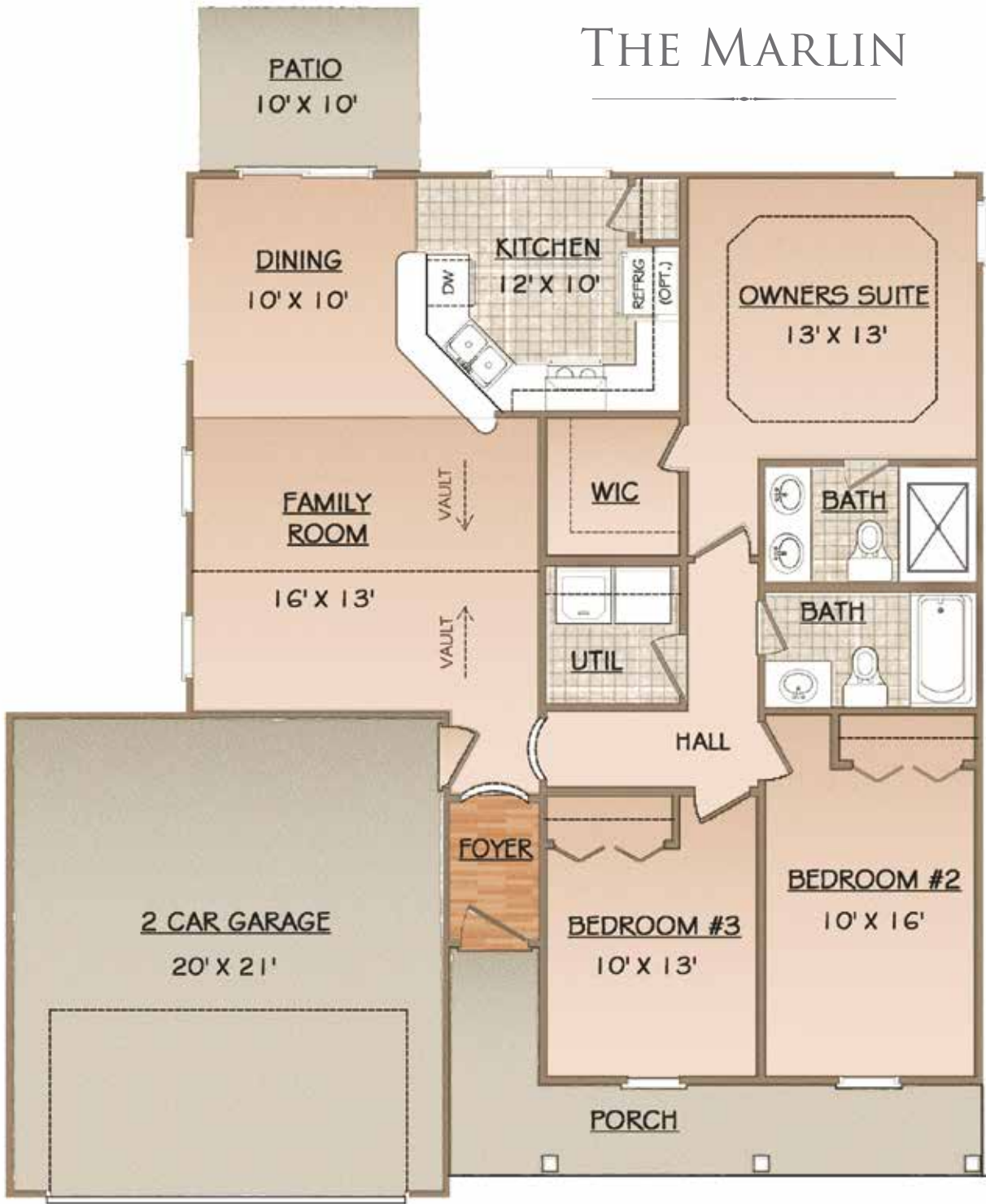


www.buildpyramid.com

FEATURES:

- Covered Front Porch
- Back Grilling Patio
- Private Owner's Suite with Walk-In Closet & Trey Ceiling
- Kitchen with Pantry and Breakfast Bar
- Utility / Laundry Room
- Brushed Nickel Hardware and Lighting Fixtures
- Hardwoods in Foyer
- Vaulted Ceiling in Family Room

THE MARLIN



DIMENSIONS ARE APPROXIMATE



www.buildpyramid.com