



PYRAMID
HOMES, INC.



THE MARSHVILLE

3 BEDROOMS, 3 BATHS
2 CAR GARAGE
1970 HEATED SQ. FT.
42'W X 68'8"D



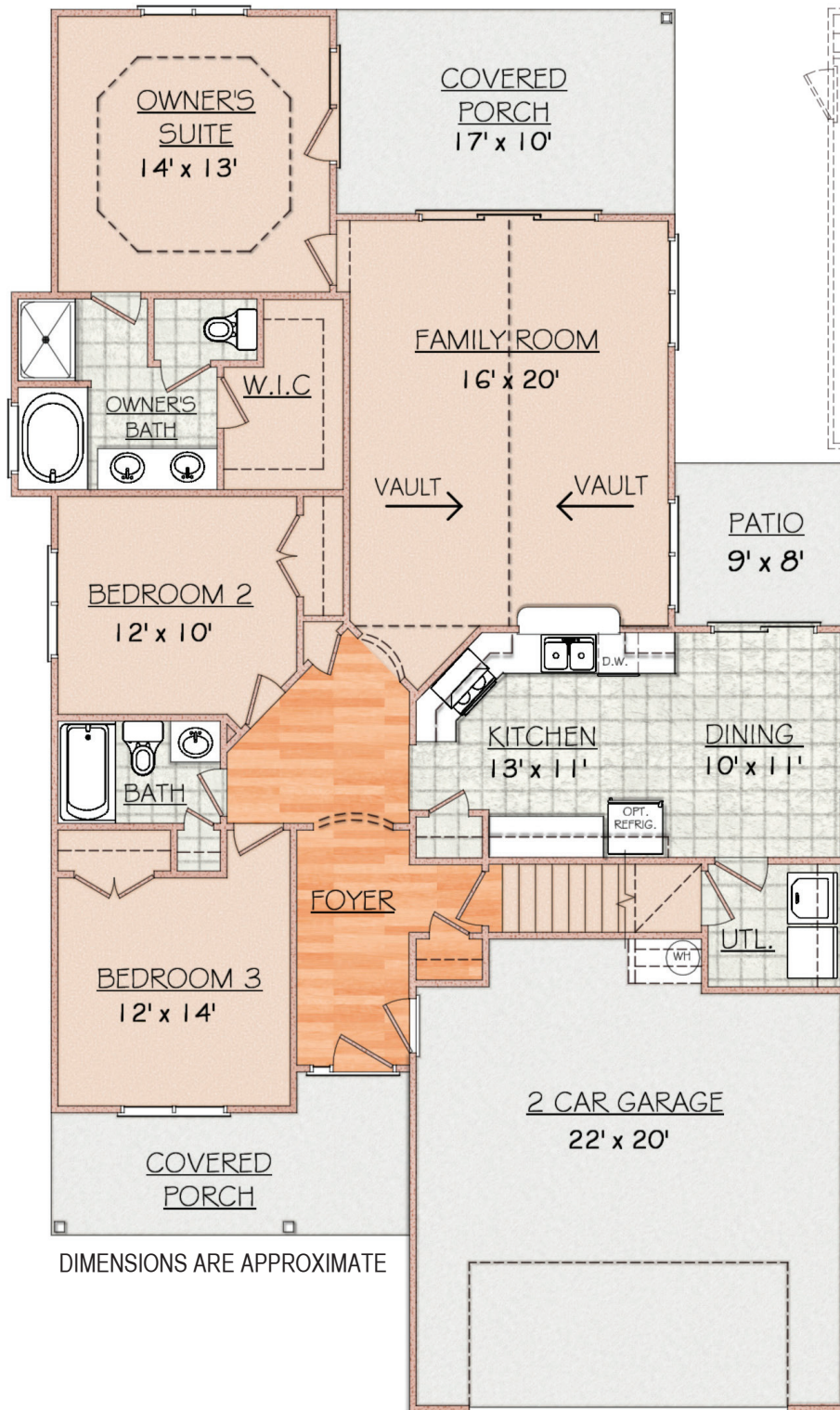
PYRAMID
HOMES, INC.

www.buildpyramid.com

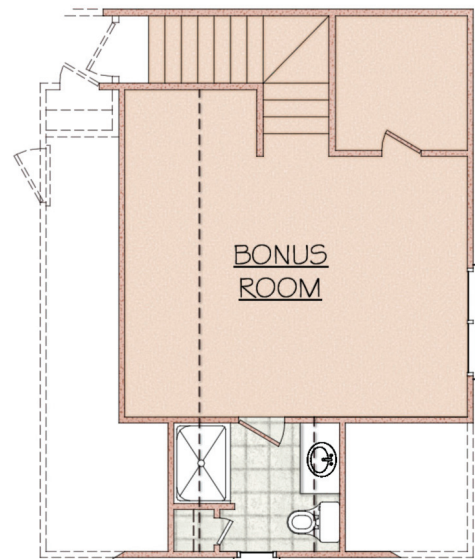
FEATURES:

- Covered Front & Spacious Rear Porches
- Private Access from Owner's Suite to Covered Porch
- Spacious Family Room with Vaulted Ceiling
- Owner's Bath with Garden Tub, Separate Shower & Walk In Closet
- Open Kitchen with Spacious Dining Area
- Hardwoods in Foyer
- Utility / Laundry Room
- Finished Room Over Garage with Full Bath

THE MARSHVILLE



DIMENSIONS ARE APPROXIMATE



BONUS ROOM IS 390 SQ. FT.



www.buildpyramid.com