



THE BETHEL

3 BEDROOMS, 3 BATHS
2 CAR GARAGE
2146 HEATED SQ. FT.
45'W X 62'6"D

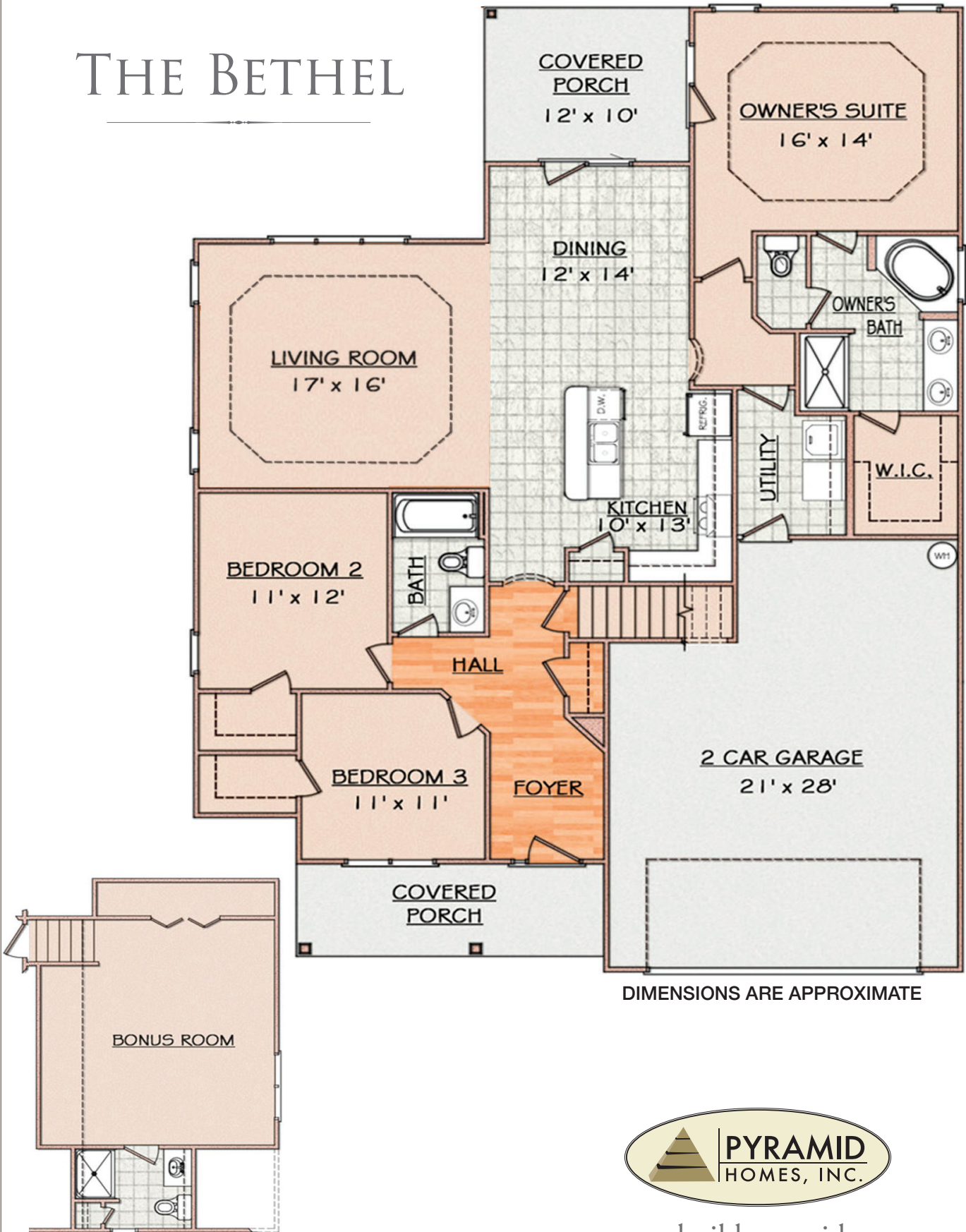


www.buildpyramid.com

FEATURES:

- Covered Front & Rear Porches
- Private owner's Suite with Trey Ceiling & Walk in Closet
- Private Access from Owner's Suite to Covered Porch
- Owner's bath with corner garden tub and Separate Shower
- Walk-in Closets in all bedrooms
- Spacious Kitchen with Pantry and Breakfast Bar
- Utility / Laundry Room
- Dining Room
- Work Area in Garage
- Finished Room Over Garage with Full Bath

THE BETHEL



DIMENSIONS ARE APPROXIMATE

BONUS ROOM IS 426 SQ.FT



www.buildpyramid.com