



THE ASHEVILLE

3 BEDROOMS, 3 BATHS
2 CAR GARAGE
2042 HEATED SQ. FT.
49'W X 60'6"D



www.buildpyramid.com

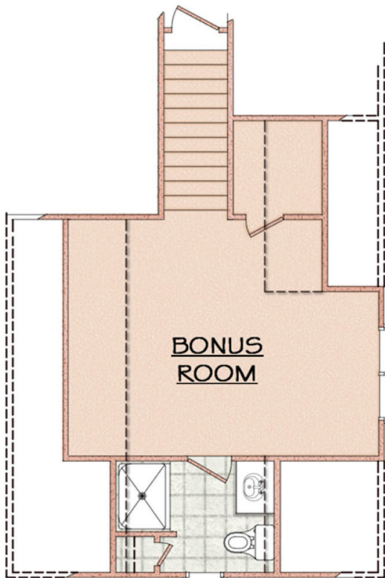
FEATURES:

- Covered Front & Rear Porches
- Formal Dining Room with Coffered Ceiling & Wainscoting
- Split Bedroom Plan Design
- Private Access from Owner's Suite to Covered Porch
- Owner's Bath with Garden Tub, Separate Shower & Walk In Closet
- Open Kitchen with Breakfast Nook
- Hardwoods in Foyer & Dining
- Work Area in Garage
- Spacious Utility / Laundry Room
- Finished Room Over Garage with Full Bath

THE ASHEVILLE



DIMENSIONS ARE APPROXIMATE



BONUS ROOM IS 368 SQ FT



www.buildpyramid.com