



THE WHITFIELD

3 BEDROOMS, 3 BATHS,
2 CAR GARAGE,
2133 HEATED SQ. FT.
43'W X 68'D

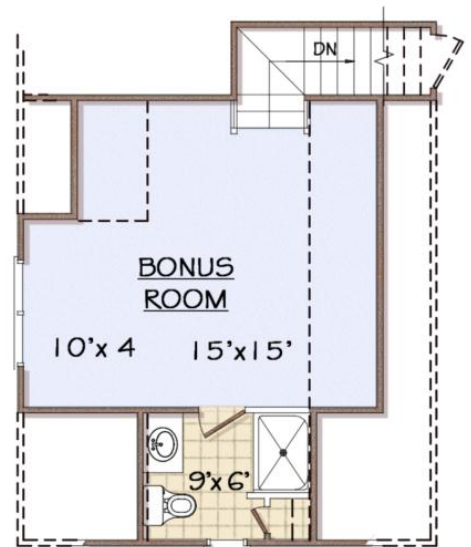
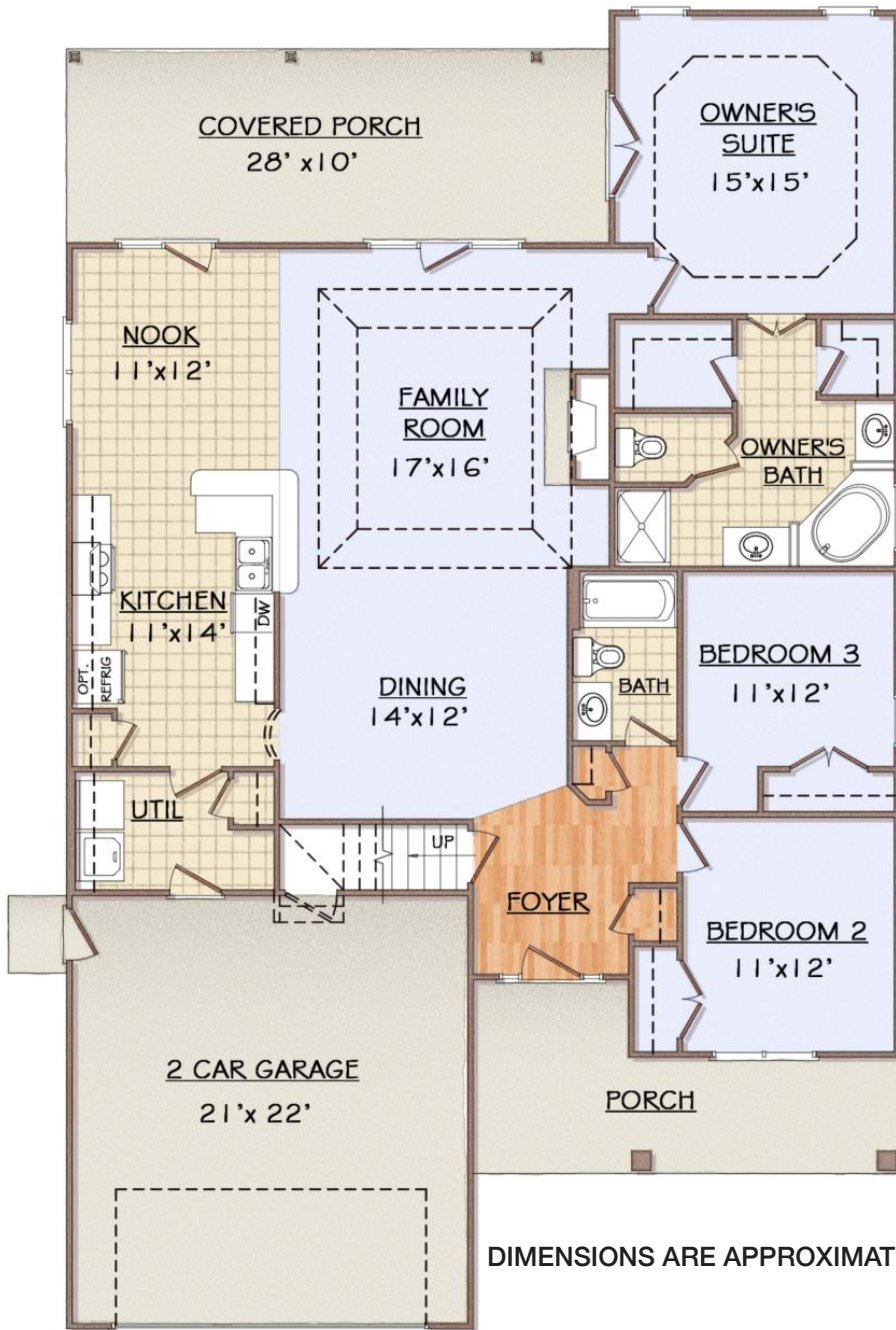


www.buildpyramid.com

FEATURES:

- Covered Front & Rear Porches
- Private Owner's Suite with Trey Ceiling and Walk In Closet
- Spacious Kitchen with Granite Countertops, Pantry and Breakfast Bar
- Utility/Laundry Room
- Owner Bath with Soaking Garden Tub & Separate Shower
- Open Floorplan with Large Family Room
- Finished Bonus Room with Bath and Storage Closet

THE WHITFIELD



353 SQ. FT.

DIMENSIONS ARE APPROXIMATE



www.buildpyramid.com