



PYRAMID
HOMES, INC.



THE HOGAN

3 BEDROOMS, 3 BATHS
2 CAR GARAGE,
2361 HEATED SQ. FT.
56'W X 54'D

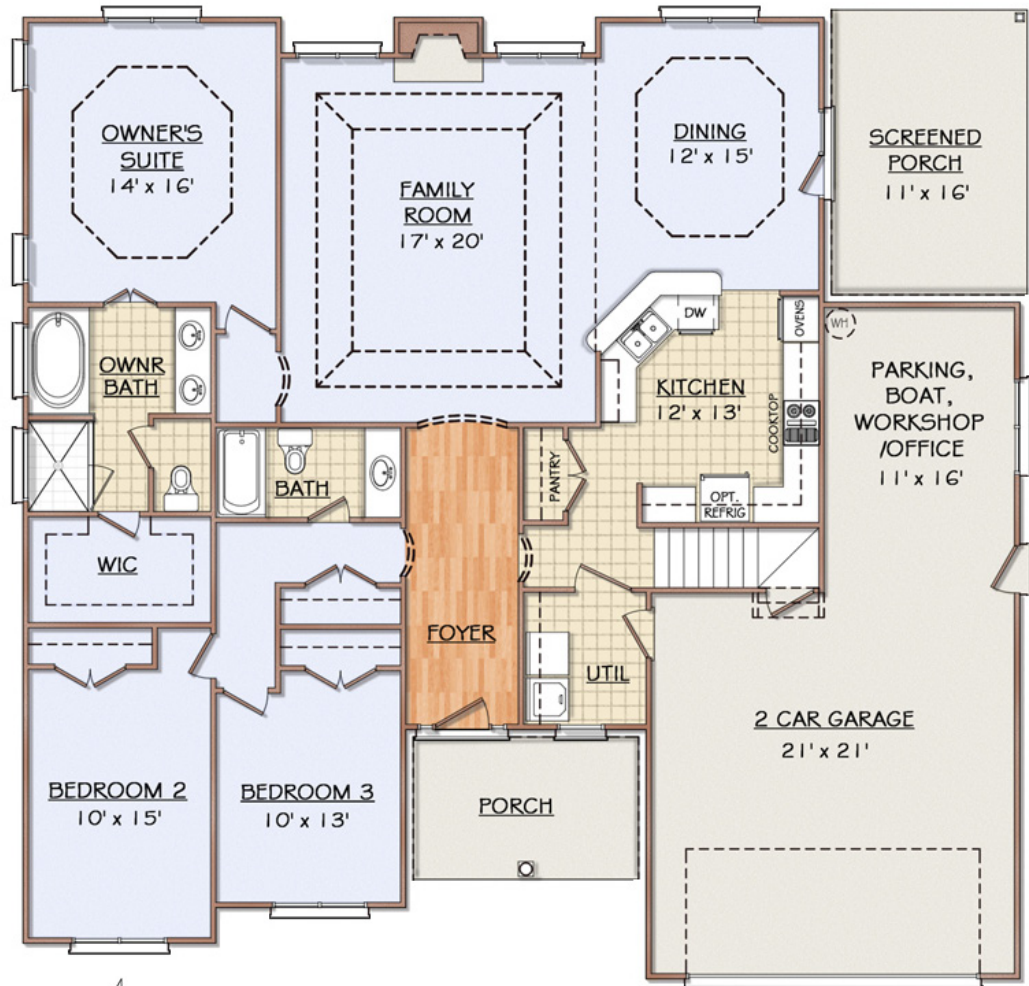


www.buildpyramid.com

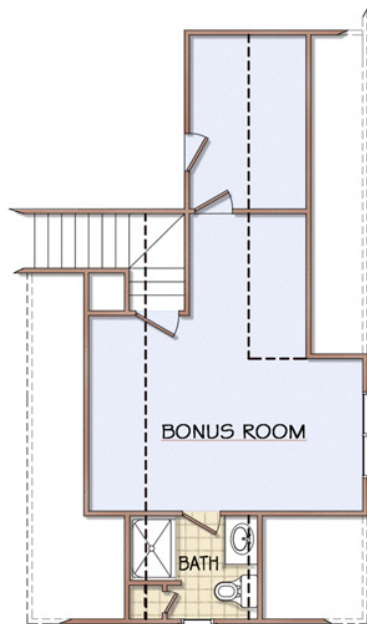
FEATURES:

- Covered Front & Rear Porches
- Private Owner's Suite with Trey Ceiling and Walk In Closet
- Spacious Kitchen with Granite Countertops, Pantry and Breakfast Bar
- Utility/Laundry Room
- Owner Bath with Soaking Garden Tub & Separate Shower
- Open Floorplan with Large Family Room
- Finished Bonus Room with Bath and Storage Closet
- Large Work Area in Garage

THE HOGAN



DIMENSIONS ARE APPROXIMATE



434 SQ FT.
w/ DORMER & BATH



www.buildpyramid.com