



THE PALMER

3 BEDROOMS, 2½ BATHS,
2 CAR GARAGE,
2857 HEATED SQ. FT.
52'W X 61'D

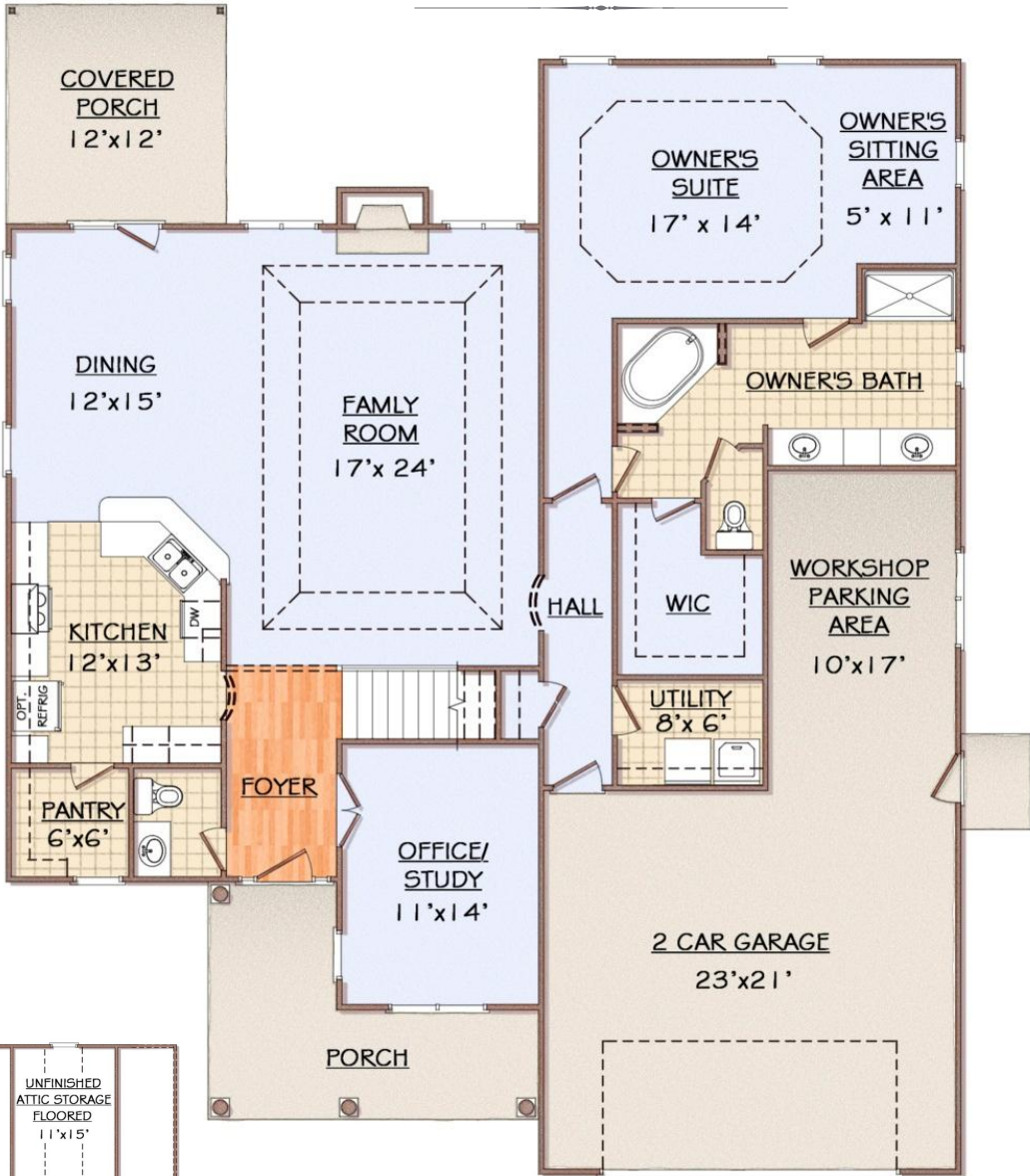


www.buildpyramid.com

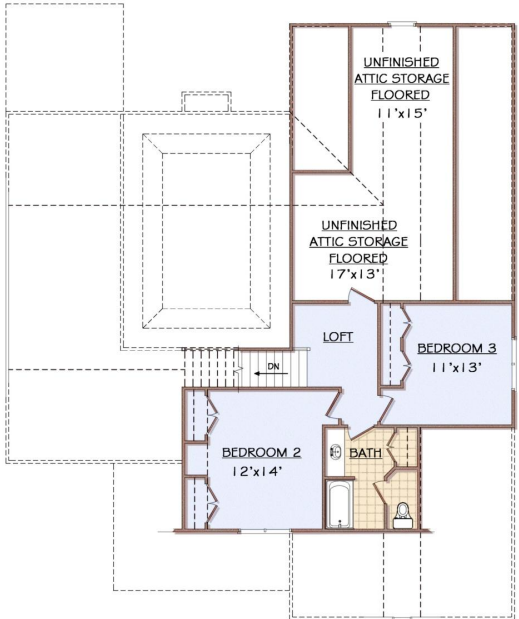
FEATURES:

- Covered Front & Rear Porches
- Private Owner's Suite with Trey Ceiling and Walk In Closet
- Spacious Kitchen with Granite Countertops, Pantry and Breakfast Bar
- Utility/Laundry Room
- Owner Bath with Soaking Garden Tub & Separate Shower
- Open Floorplan with Large Family Room
- Finished Bonus Room with Bath and Storage Closet
- Work Area In Garage

THE PALMER



DIMENSIONS ARE APPROXIMATE



SECOND FLOOR



www.buildpyramid.com