



**PYRAMID**  
HOMES, INC.



## THE MASONBORO

5 BEDROOMS, 2 ½ BATHS  
2 CAR GARAGE  
2660 HEATED SQ. FT.  
36'W X 50'D

[www.buildpyramid.com](http://www.buildpyramid.com)



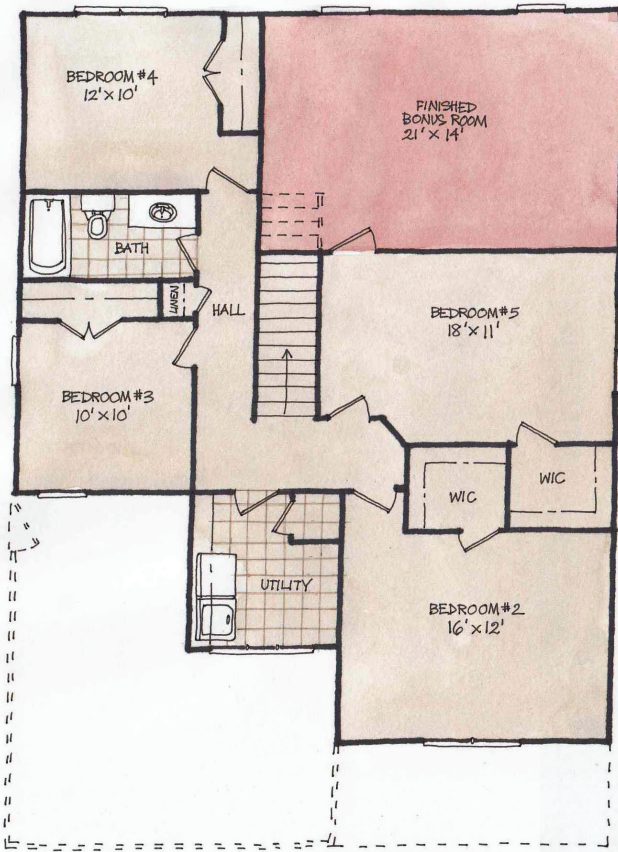
**PYRAMID**  
HOMES, INC.

## FEATURES:

- Covered Front porch
- Owner's Suite Downstairs with Walk in Closet & Trey Ceiling
- Brushed Nickel Hardware and Lighting Fixtures
- Hardwood Floors in Foyer
- Utility / Laundry Room
- Formal Dining Room with Coffered Design Ceiling
- Large Secondary Bedrooms Upstairs
- Finished Bonus Room Upstairs

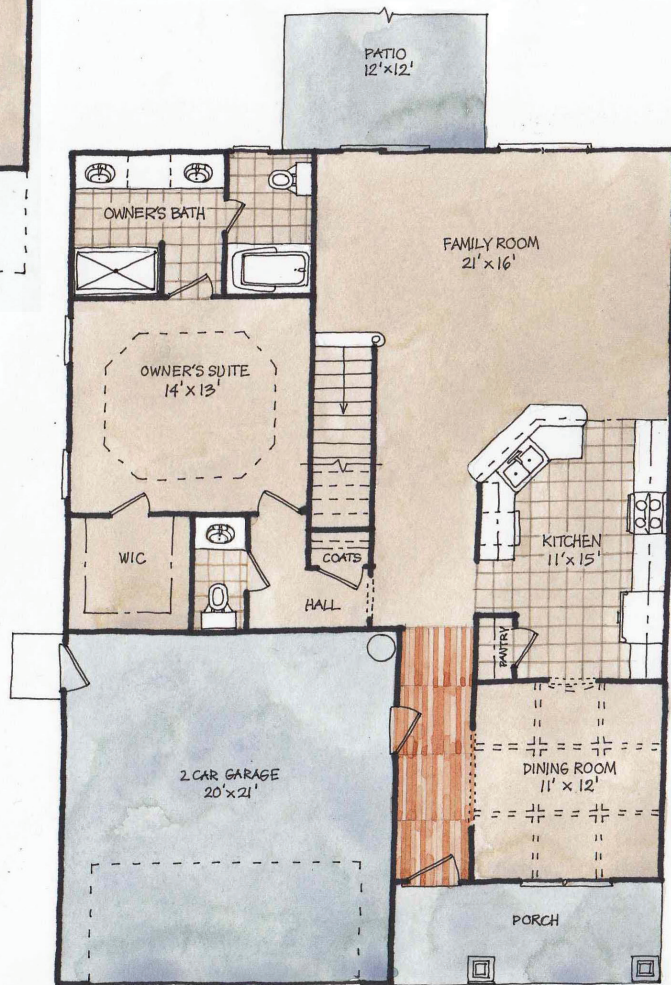
# THE MASONBORO

## 2ND FLOOR



DIMENSIONS ARE APPROXIMATE

## 1ST FLOOR



[www.buildpyramid.com](http://www.buildpyramid.com)