



## THE HARBOR

3 BEDROOMS, 2 ½ BATHS  
2 CAR GARAGE  
1680 HEATED SQ. FT.  
44'W X 39'D

[www.buildpyramid.com](http://www.buildpyramid.com)



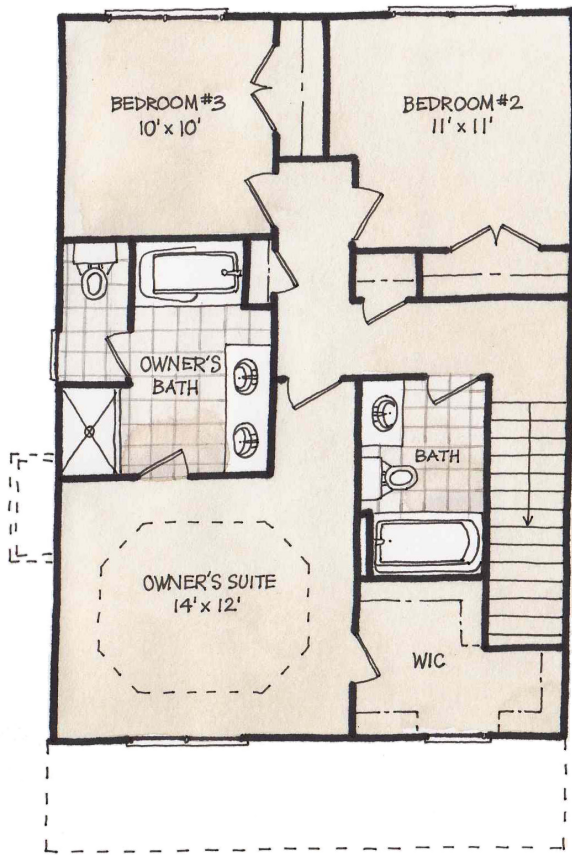
## FEATURES:

- Covered Front porch
- Owner's Suite Upstairs with Walk in Closet & Trey Ceiling
- Brushed Nickel Hardware and Lighting Fixtures
- Hardwood floors in foyer
- Utility / laundry room
- Workshop Area in Garage



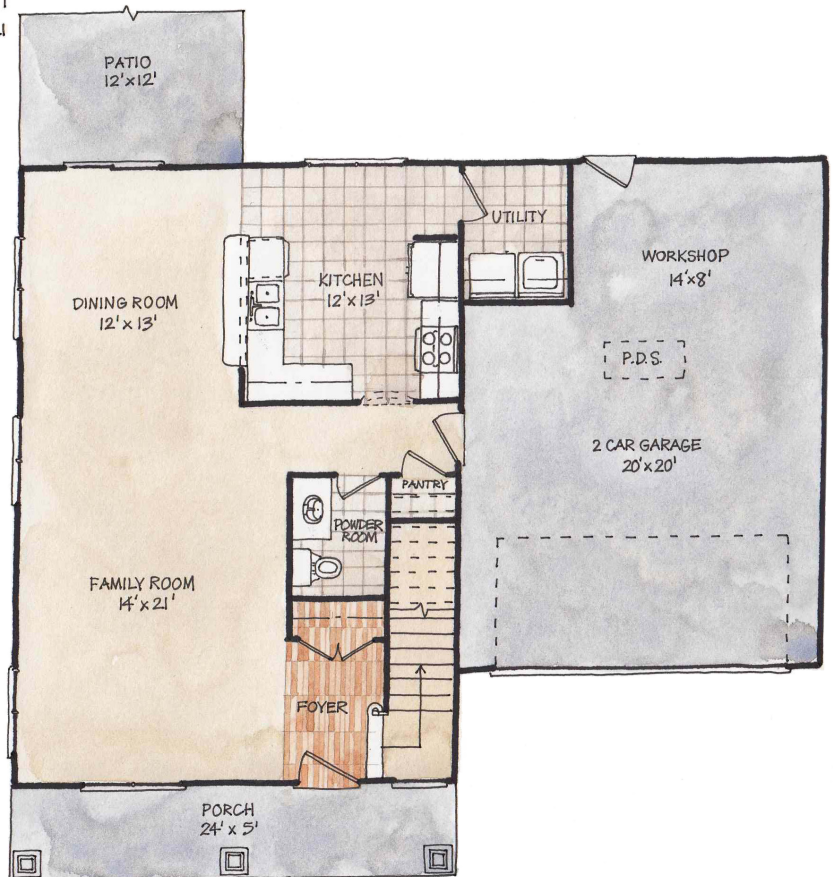
# THE HARBOR

## 2ND FLOOR



DIMENSIONS ARE APPROXIMATE

## 1ST FLOOR



[www.buildpyramid.com](http://www.buildpyramid.com)